

# Lucidiom Tech Notes: Photogize XConnect Interface



## Table of Contents

Purpose of This Document.....	2
Prerequisites.....	2
Setting up Photogize's XConnect.....	2
Setting up Photogize XConnect Using the Setup Wizard .....	5
Editing the General Photogize XConnect Interface Settings .....	5
Assigning the Products Available to the Photogize XConnect Interface.....	8
Manual Configuration for Photogize XConnect.....	9
Manual Configuration for individual products.....	10
Matching the Products in the APM to the printer.....	11

## Purpose of This Document

The Photogize XConnect interface allows the APM(s) or Print Station software to create orders generated from an APM and send them directly to the Photogize software (version **2.1** or higher). This document is intended to guide through each step in setting up the connection in-between the APM(s) or Print Station software and the Photogize software.

## Prerequisites

- 1.) The APM and/or Print Station need to be able to see the Photogize machine across the local area network and vice versa.
- 2.) The products and auto-harvest option need to be set up prior the APM or Print Station setup for XConnect interface. Please see [Setting up Photogize's XConnect](#).
- 3.) If Print Station is not present in the local installation, then at least one or more fulfillments must be enabled to print to a local printer connected to the APM as seen from a screenshot here taken from the main options of an enabled fulfillment in the Setup Wizard.

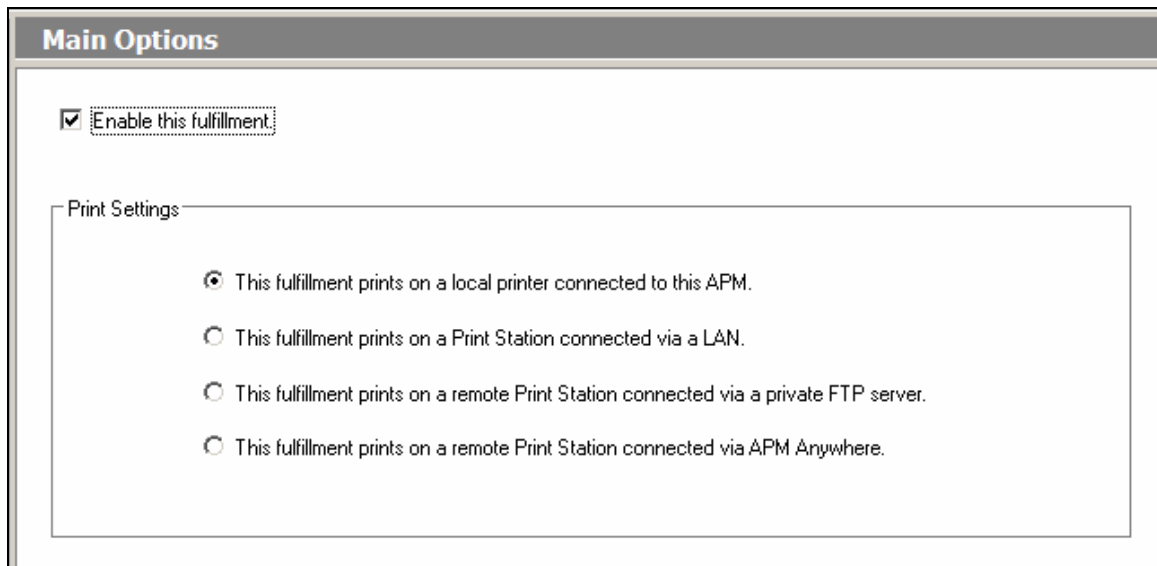


Figure 1: Main Options in the Fulfillment Window

## Setting up Photogize's XConnect

The first step of setting up Photogize and the APM or Print Station to interface with one another is to setup the XConnect feature in Photogize. This feature allows for 3<sup>rd</sup> party applications such as the APM Print Station to connect and send orders to Photogize.

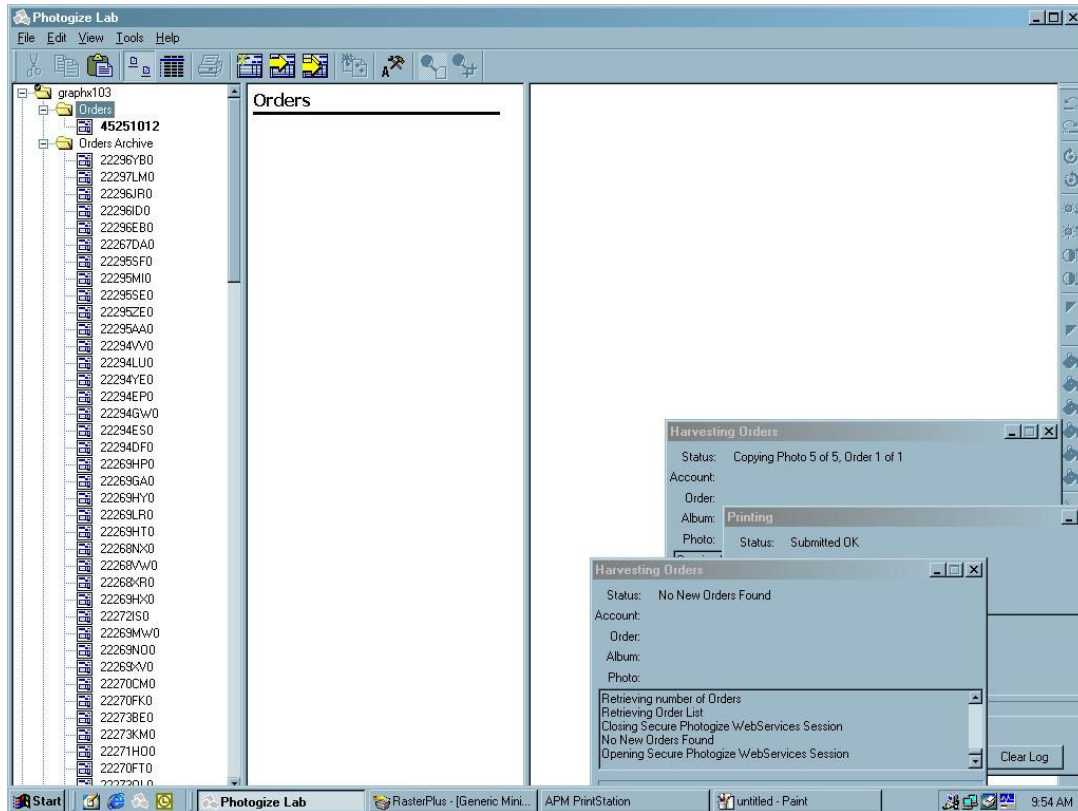


Figure 2: Photogize Screen

- 1.) On the Photogize main screen click on the Orders folder on the left. (See Figure 1.)
- 2.) Click on the Account Properties button (It's the button with the A and the hammers on it).

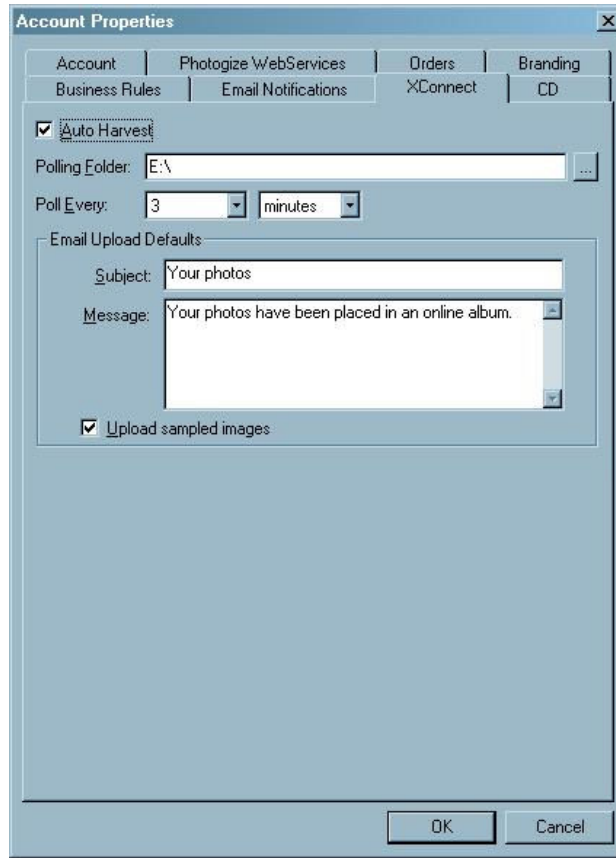


Figure 3: Account Properties

- 3.) In Account Properties windows, select the XConnect tab. (See Figure 3.)
- 4.) Check the Auto Harvest box.
- 5.) Enter the location in the *Polling Folder* where you would like for the Orders from the APM or Print Station to go and where Photogize can then harvest them. This can be a mapped drive letter such as *E:\* or a folder on the hard drive such as *C:\APMOrders*
- 6.) Lower the *Poll Every* to your designated time. Default is 5 minutes, but it may be better to lower it to 3 minutes or less depending on the amount of expected orders coming, network bandwidth, etc.
- 7.) Click OK to save your settings
- 8.) Go to the Polling Folder location and confirm that a file called *server.xml* is there. (*\*Note: It may take some time for the server.xml to be created, and Photogize may need to be closed then reopened for it to generate.*)
- 9.) Open the *server.xml* file by double clicking on it. (It should open in either Internet explorer or Notepad.)
- 10.) Make a note of the number of products and record the `<name>` for the product as this will be used to match up the APM products with the Photogize product. It is important to keep in mind that this file is based on the products setup in Photogize, and may be unique to each and every lab. See the sample below for reference.

```
<product>  
  <name>4x6 Matte</name>  
  <description>Standard Print in Matte Finish</description>
```

```
<device>Generic MiniLab</device>
<widthinches1000>6000</widthinches1000>
<heightinches1000>4000</heightinches1000>
<unitpricepennies>49</unitpricepennies>
<weightounces100>5</weightounces100>
<numpricebreaks>5</numpricebreaks>
<pricebreak from="1" to="24">
  <qtypricepennies>49</qtypricepennies>
</pricebreak>
<pricebreak from="25" to="49">
  <qtypricepennies>44</qtypricepennies>
</pricebreak>
<pricebreak from="50" to="74">
  <qtypricepennies>39</qtypricepennies>
</pricebreak>
<pricebreak from="75" to="99">
  <qtypricepennies>34</qtypricepennies>
</pricebreak>
<pricebreak from="100" to="999">
  <qtypricepennies>29</qtypricepennies>
</pricebreak>
</product>
```

11.) Once all the product names have been recorded close the *server.xml* file without saving any changes.

## Setting up Photogize XConnect Using the Setup Wizard

The easiest method to setup the APM to print to the Photogize XConnect Interface is via the Setup Wizard. There are several steps for setting up the interface using this method.

This process includes the following steps:

- 1.) Editing the Photogize XConnect Interface Settings
- 2.) Product Setup within the Photogize XConnect Interface
- 3.) Assigning the Products available to the Photogize XConnect Interface

## Editing the General Photogize XConnect Interface Settings

To configure the APM or Print Station for Photogize XConnect, make sure a keyboard and mouse are attached then:

### If sending orders straight from the kiosk (Print Server):

- 1.) Press the bottom left corner of the intro screen.
- 2.) Enter the pass code (default is 1234)
- 3.) Select Setup Wizard

**If using Print Station software installed on a separate computer:**

- 1.) Maximize the Print Station software.
- 2.) Click the *Menu* buttons and select *Setup Wizard*.
- 3.) If this does not work, the Setup Wizard can be launched manually, C:\APM\setupwizard.exe.

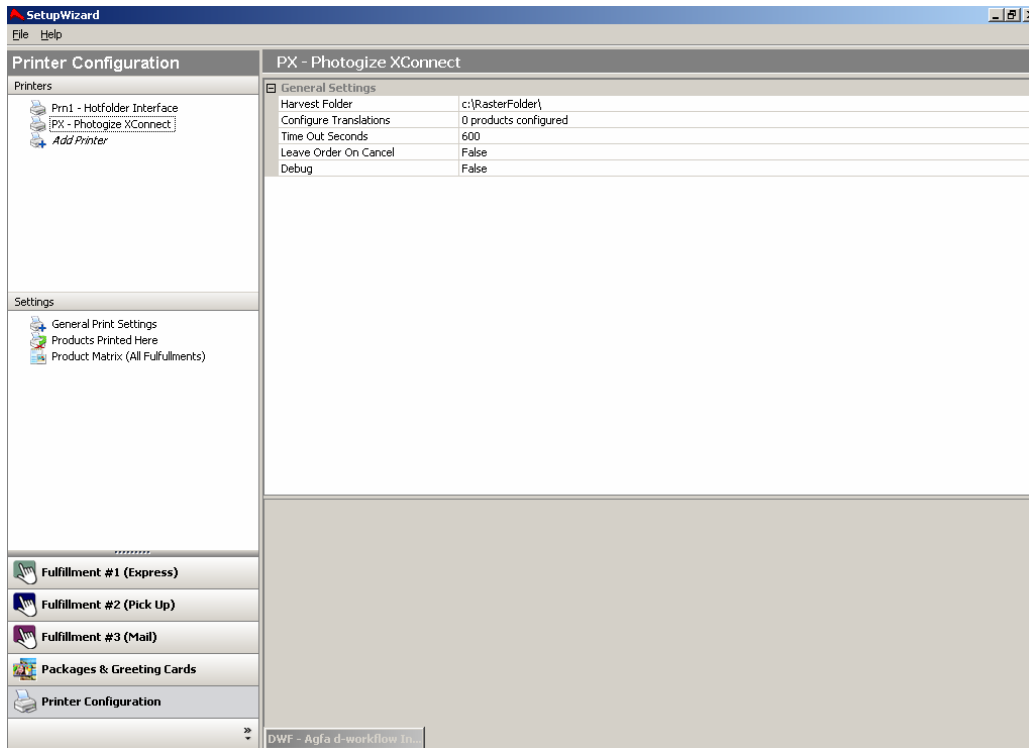


Figure 2: Setup Wizard Printer Configuration Screen

- 4.) Click on Printer Configuration
- 5.) Click on *Add Printer*.
- 6.) On the menu at the right, select Photogize XConnect
- 7.) In the name *Printer Name* field, enter PX
- 8.) Click on the newly created PX-Photogize XConnect option on the top left to display the options for the Photogize XConnect Interface.
- 9.) *Harvest Folder* should be set the same value as the *Polling Folder* path in the [Photogize XConnect setup](#). (Default is **C:\RasterFolder\**, as seen in Figure3.) If the folder is located on a separate machine on which Photogize is installed, the computer name needs to be included (e.g. [\\ComputerName\RasterFolder](#) )

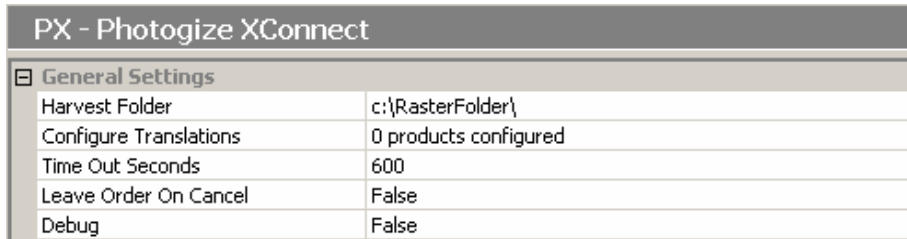


Figure 3: Photogize XConnect General Settings

- 10.) Click on *Configure Translations* to configure individual products for this interface. Click on *Add* on *Configure Translations* windows to add a new product or on *Edit* to edit the settings for a product.

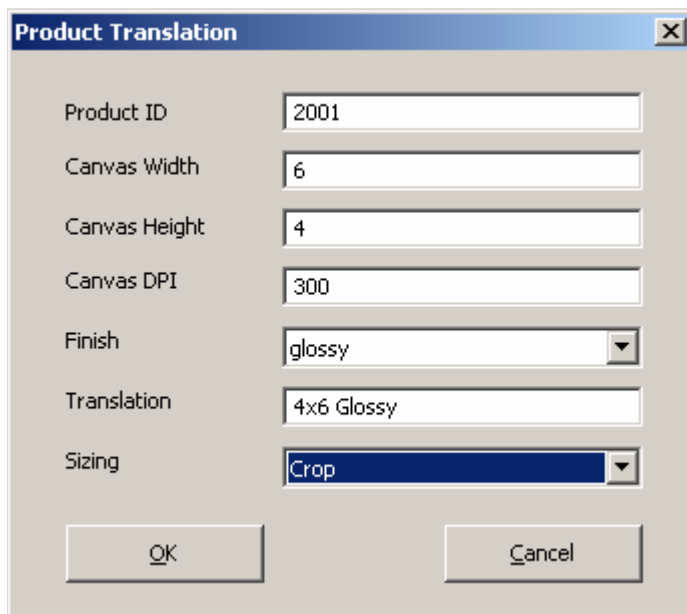


Figure 4: Photogize XConnect Product Translation Window

- 1.) In the *Product ID* field, enter the corresponding product id.
  - 2.) *Canvas Width* is the width of the product.
  - 3.) *Canvas Height* is the height of the product.
  - 4.) For *Canvas DPI*, **300** is generally used.
  - 5.) *Finish* option can be either glossy or matte.
  - 6.) *Translation* needs to match the name that is specified in *server.xml* file generated by the Photogize XConnect. (See [Setting up Photogize's XConnect](#) )
  - 7.) *Sizing* should set as **Crop**.
- 11.) *Timeout Out Seconds* can be increased or decreased to troubleshoot the connection in-between the APM or Print Station and the Photogize.
  - 12.) *Leave Order On Cancel* should be left as default which is **False**.
  - 13.) Turn the *Debug* on if error message needs to be clarified or explained. Default is **False**.

## Assigning the Products Available to the Photogize XConnect Interface

Once the Photogize XConnect Interface is set up, products will then need to be assigned to print to the Photogize XConnect interface.

- 1.) Click on the **Products Printed Here** option on the left.

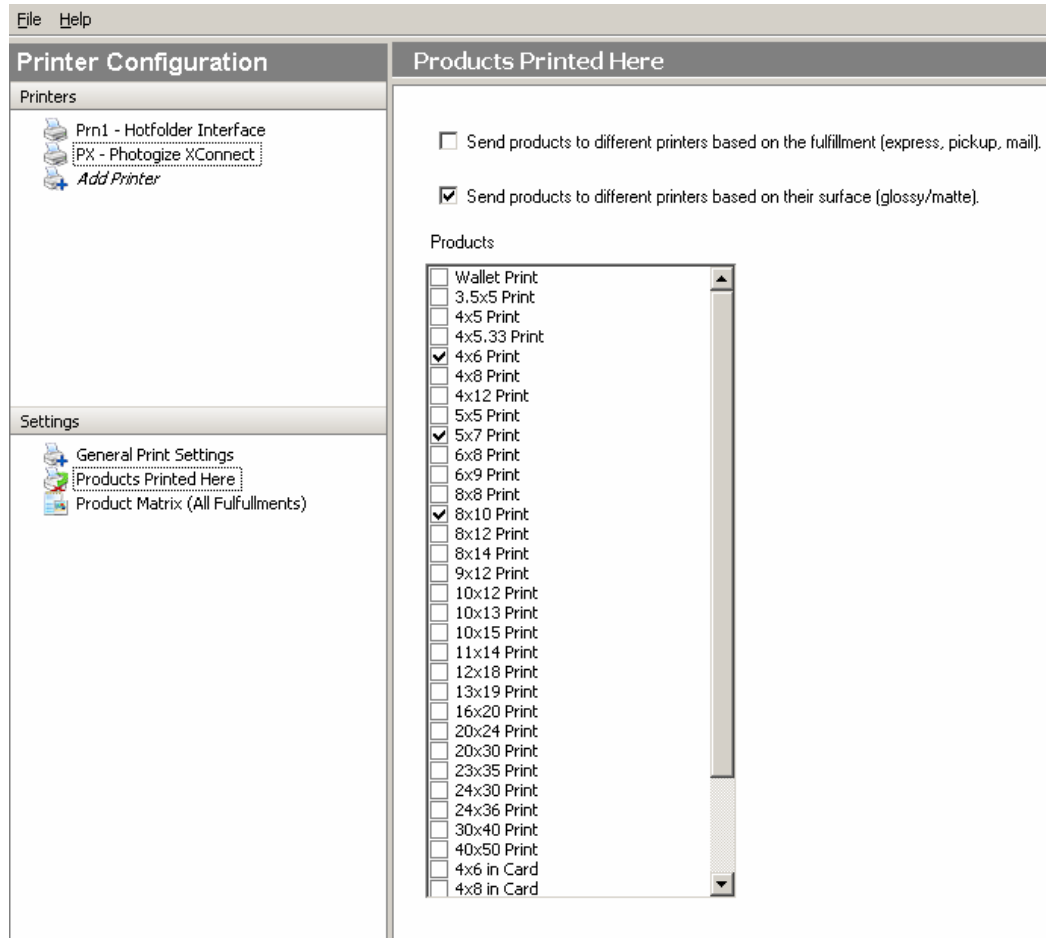


Figure 5: Selecting "Products Printed Here"

- 2.) Check all the products that will be printed using the APM printing engine
- 3.) If the products are going to different printer interfaces based on the fulfillment and/or finish, then check the boxes at the top of the screen and make sure that each product for each fulfillment that will be printed is checked.
- 4.) Click on the **Product Matrix (All Fulfillments)** on the left.

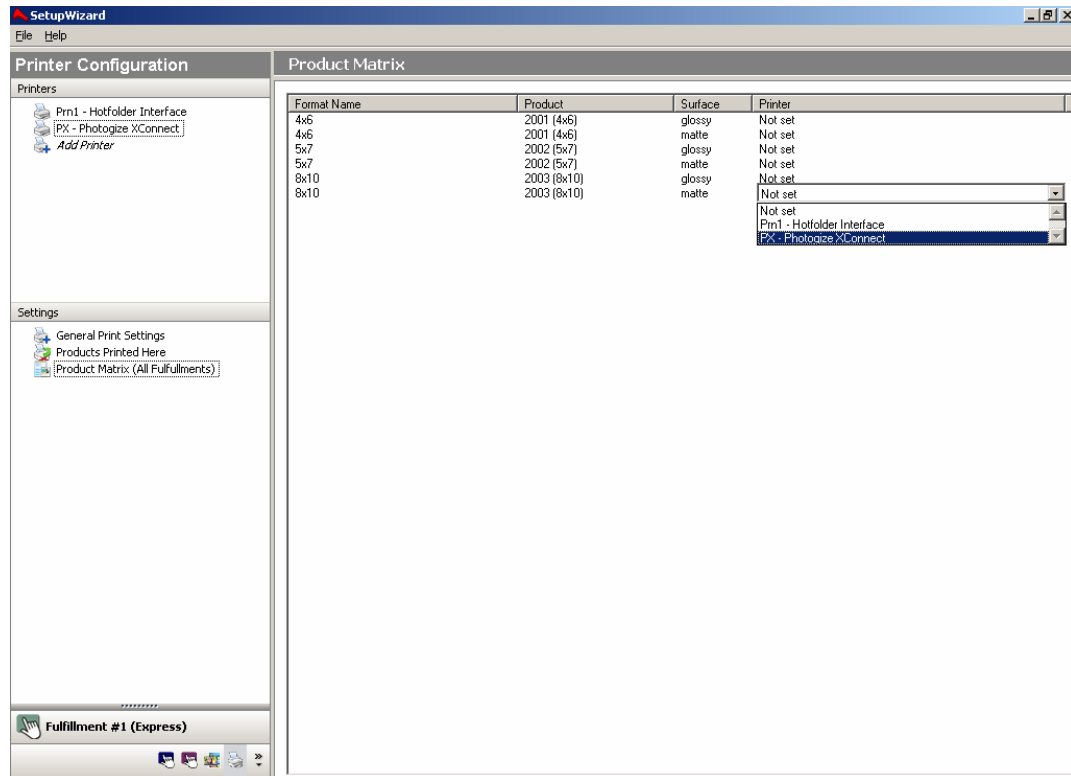


Figure 6: Assigning Printers to each Product in the Product Matrix

- 5.) For each product listed, click on the **Printer** column and select the desired printer.
- 6.) If there is more than one **Product Matrix** option, repeat for each matrix.
- 7.) Save the settings when exiting by clicking on exit

## Manual Configuration for Photogize XConnect

If the Setup Wizard is not available, then the Photogize XConnect interface can be manually configured by editing the *apmconfig\_printstation.xml* file.

### To Manually Set Up:

- 1.) From the APM screen, press the bottom left corner of the screen and enter the pass code.
- 2.) Select **Quit APM Software**.
- 3.) Go to the system tray on the APM computer, find the Hardware Attendant, right-click it and select **Quit Hardware Attendant**.
- 4.) Click on "My Computer" and navigate to C:\APM.
- 5.) If you are using the Print Station, open up the **apmconfig\_printstation.xml** file found in the C:\APM directory of the machine where the Print Station is installed. Open this file in Notepad.
- 6.) Click on Edit, Find and enter **PX**
- 7.) On the line where you see prnXX (probably **PX**), change the setting enabled= to true.  
The settings in the file will then look like the following:

```
<printer id="PX" enabled="true">
```

- 8.) On the same line where you found the **PhotogizeXConnectPrinter**, enter the information in each section as needed. The functionality of each of the options is listed in the table below:

<b>name</b>	The name of the printer driver. Default is <b>PhotogizeXConnectPrinter</b> .
<b>time_out_seconds</b>	How long to wait for Photogize to respond. Default is <b>600</b> secs.
<b>leave_order_on_cancel</b>	Should remain default, <b>False</b> .
<b>folder</b>	The folder location where Photogize will pickup orders from
<b>debug</b>	Default is <b>False</b> . Set to <b>True</b> if troubleshooting the connection between APM or Print Station and Photogize.

### Manual Configuration for individual products

After the general settings for Photogize XConnect interface are completed, it is necessary to configure for each product.

In the example below, three sizes are configured for Photogize XConnect interface, 4x6, 5x7 and 8x10. For each product, it is important to specify the correct product translation, which is case-sensitive.

```
<printer id="PX" enabled="true">
  <driver time_out_seconds="600" leave_order_on_cancel="false"
name="PhotogizeXConnectPrinter" folder="c:\RasterFolder\" debug="false">
    <product_translation canvas_height="4.000000" finish="glossy"
canvas_dpi="300" canvas_width="6.000000" translation="4x6 Glossy"
product_id="2001" sizing="Crop" />
    <product_translation canvas_height="4.000000" finish="matte"
canvas_dpi="300" canvas_width="6.000000" translation="4x6 Matte"
product_id="2001" sizing="Crop" />
    <product_translation canvas_height="5.000000" finish="glossy"
canvas_dpi="300" canvas_width="7.000000" translation="5x7 Glossy"
product_id="2002" sizing="Crop" />
    <product_translation canvas_height="5.000000" finish="matte"
canvas_dpi="300" canvas_width="7.000000" translation="5x7 Matte"
product_id="2002" sizing="Crop" />
    <product_translation canvas_height="8.000000" finish="glossy"
canvas_dpi="300" canvas_width="10.000000" translation="8x10 Glossy"
product_id="2003" sizing="Crop" />
    <product_translation canvas_height="8.000000" finish="matte"
canvas_dpi="300" canvas_width="10.000000" translation="8x10 Matte"
product_id="2003" sizing="Crop" />
  </driver>
</printer>
```

The explanation of the settings in each product line is provided below:

<b>canvas_height</b>	The height of the product. (in inch)
<b>canvas_width</b>	The width of the product (in inch)

<b>finish</b>	Finish can be either glossy or matte.
<b>canvas_dpi</b>	dpi for the product, default is <b>300</b> .
<b>translation</b>	The matching product name in server.xml generated by the Photogize XConnect.
<b>product_id</b>	Use Lucidiom product id.
<b>sizing</b>	Default is <b>Crop</b> . Should remain unchanged.

## Matching the Products in the APM to the printer

- 1.) In the `<formats>` section of the `apmconfig_printstation.xml` file, make sure that the sizes you want to print are setup to print to the correct driver.

This is done by editing the `printer_id=` to match the printer name.

### Example:

4x6s from all fulfillments go to PX, so the formats section will look like the following:

```
<formats>
<format width="6000in" finish="matte" min_res_width="800" printer_id="PX"
height="4000in" min_res_height="530" name="4x6" product_id="2001"
fulfillment="express" />
<format width="6000in" finish="glossy" min_res_width="800" printer_id="PX"
height="4000in" min_res_height="530" name="4x6" product_id="2001"
fulfillment="express" /
<format width="6000in" finish="matte" min_res_width="800" printer_id="PX"
height="4000in" min_res_height="530" name="4x6" product_id="2001"
fulfillment="pickup" />
<format width="6000in" finish="glossy" min_res_width="800" printer_id="PX"
height="4000in" min_res_height="530" name="4x6" product_id="2001"
fulfillment="pickup" />
<format width="6000in" finish="matte" min_res_width="800" printer_id="PX"
height="4000in" min_res_height="530" name="4x6" product_id="2001"
fulfillment="mail" />
<format width="6000in" finish="glossy" min_res_width="800" printer_id="PX"
height="4000in" min_res_height="530" name="4x6" product_id="2001"
fulfillment="mail" />
</formats>
```

- 2.) Once the `apmconfig_printstation.xml` file is set up, save and close it.
- 3.) Restart the APM or Print Station software.